

Mirova Global Sustainable Equity Fund Impact Report 2023



An affiliate of:  **NATIXIS**
INVESTMENT MANAGERS

Mirova Global Sustainable Equity Fund is a sub-fund of the Luxembourg SICAV Mirova Funds, approved by the Luxembourg Commission for the Supervision of the Financial Sector (the "CSSF"). Natixis Investment Managers International is the management company, and has delegated financial management to Mirova US. In the US: This material is being provided by Natixis Distribution, L.P. ("Natixis Distribution"), a FINRA registered limited purpose broker-dealer. Services/products mentioned herein are managed/issued by Mirova US LLC (the "Affiliate"), through which Mirova is operated in the U.S.. Reference to a ranking, a label and/or an award does not indicate the future performance of the UCITS/AIF or the fund manager.



JENS PEERS, CFA
CIO and Portfolio
Manager, Sustainable
Equity



**SOLIANE
VARLET**
Portfolio Manager



**HUA CHENG, CFA,
PhD**
Portfolio Manager¹



**MANON
SALOMEZ**
Impact and ESG
Specialist¹

A decade later: reinforced convictions and strengthened resources

JENS: Just over ten years ago, we launched an active, multi-thematic fund with sustainability fully integrated because we were – and remain – convinced that it offers investors a better way of investing from a risk-return perspective. We also believe that every company, including ours, plays a role in how the world will look in the future, for better or worse, and we want to make a positive impact overall. We built this portfolio to marry financial performance with impact, which are inextricably linked over the long term.

That may sound simple enough but when we created the strategy in 2013, bringing together multiple long-term themes with a sustainability approach was a relatively novel concept. Over the last ten years, the sustainable investment landscape has grown and evolved to become more mainstream and regulated, yet its credibility is still challenged and it is increasingly politicized in some markets. This pushback is to be expected, as with anything that experiences the significant growth this space has seen, or that disrupts business as usual. Our convictions, however, have remained unchanged. We believe that combining multiple secular economic trends and sustainability in one approach will drive better investment returns and

“We believe that combining multiple secular economic trends and sustainability in one approach will drive better investment returns and sustainability outcomes over time.”

sustainability outcomes over time. We also believe that this type of diversified, multi-thematic approach can meet the needs of large and small investors alike. Importantly, with a high-capacity strategy, we find opportunity to gain easier access to the management teams, and more of a voice with companies to help positively influence their practices.

HUA: Looking at the various factors of our past and continued success, our people and our disciplined process are key. We three portfolio managers work together very closely to co-manage the strategy day-to-day. We are supported by fundamental and sustainability research analysts, with both teams helping us to meet our dual objective: to deliver better financial return and a portfolio with more compelling sustainability impact than the broad market. Over the years, Mirova has continuously invested in its expertise and now has one of the largest sustainability research teams in the industry, with one of the longest track records. Contributions from other teams at Mirova are also critical to our success, particularly in our ability to develop meaningful and transparent partnerships with our clients. In addition, our investment process, which begins with long-term thinking around the trends that are

shaping the economy, is essential to the strategy's success. We believe that this process is time-proven, and we are confident that it will continue to deliver results going forward.

SOLIANE: Although I joined the team in a portfolio management capacity in recent years, the well-defined process and my previous knowledge of most of the companies in the portfolio have enabled a smooth transition. We also attribute our success in part to the diversity of our team. Jens, Hua and I and the broader team come from different educational and cultural backgrounds, which has been invaluable in our ability to bring different perspectives to our work, to collaborate with and to challenge each other. This strong team culture is also something we have worked to strengthen, and this is evident in the recruitment we did throughout 2023.

MANON: The sustainability research philosophy has also remained stable over the past ten years. The objective of the team has always been to identify companies that, in addition to their exposure to the secular transitions, can positively contribute to the sustainability challenges ahead, including climate change, biodiversity loss, health crises, or rising inequalities, while managing their sustainability risks very well. As the sustainable investment landscape has evolved and become more mature, we have reinforced our ESG² and impact assessment methodology, as well as our engagement and voting strategy. We have also continuously innovated to better measure the impact of our portfolios.

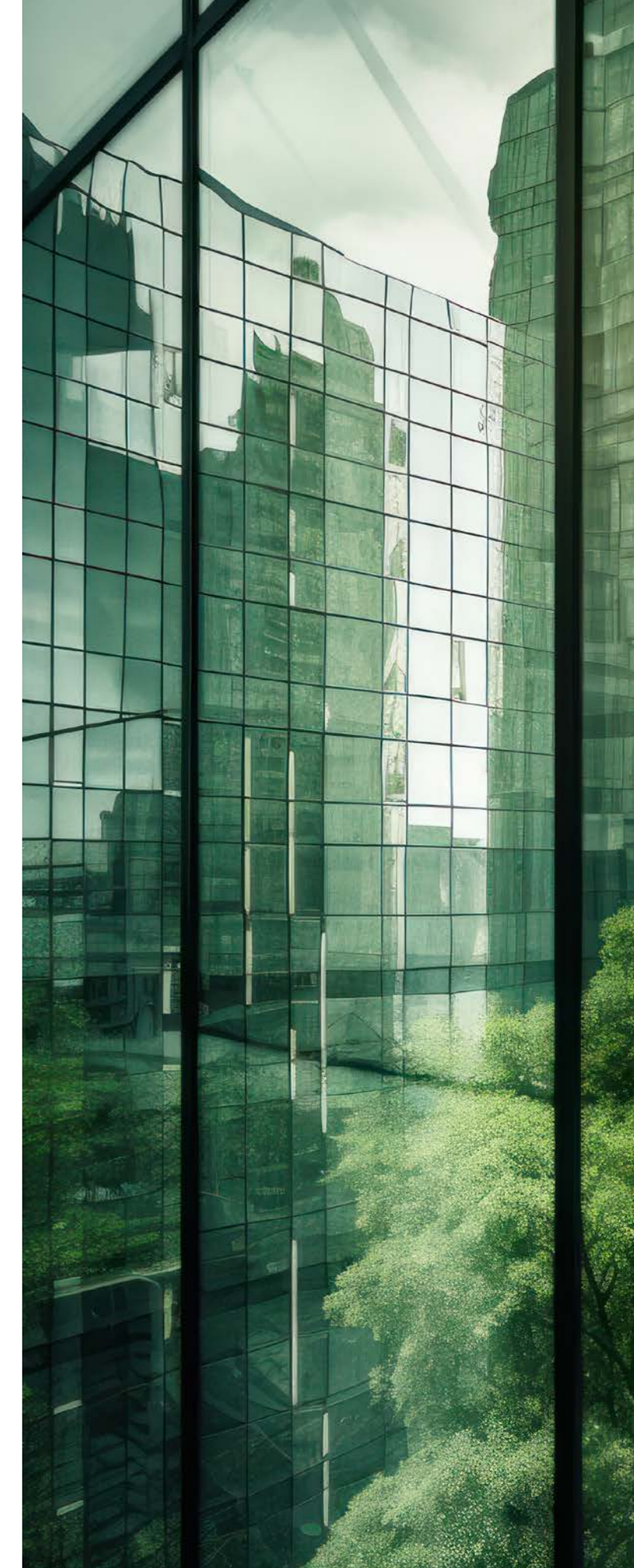
JENS: We are very proud of what we've accomplished for our clients and how we've grown as a team in the last ten years. We strive every day to promote this culture of respect and collaboration, creating a working environment that has often helped us in identifying opportunities or overlooked areas of risks. Looking forward, we aim to continue to leverage our capabilities to deliver on our objective to offer a resilient portfolio that will help investors to better weather these structural transitions.

1. Hua Cheng is contracted by Mirova and seconded to Mirova US. Mirova US and Mirova agreed on a participating affiliate agreement to provide investment advisory services to Mirova US and its clients, and are part of Mirova US compliance program.

2. Environmental, Social, Governance

The information provided reflects Mirova's opinion / the situation as of the date of this document and are subject to change without notice.

The information provided reflects Mirova's opinion / the situation as of the date of this document and are subject to change without notice.



Key impact indicators



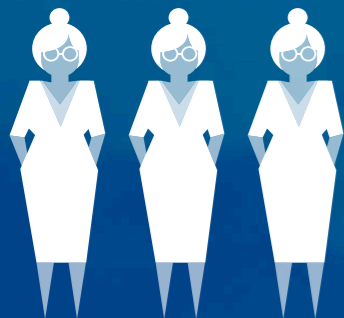
100% sustainable investment¹



63% of the portfolio has validated science-based targets or has committed to do so



<2°C implied temperature rise²



21% women in executive committees



45 engagements

Source: Mirova.

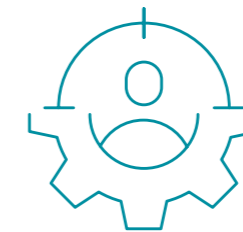
1. Sustainable Investment: Companies or activities that contribute to the achievement of one or more SDGs through their products and services and/or their processes, and which demonstrate a sufficient capacity to mitigate their environmental, social and governance risks through their corporate social responsibility (CSR) strategy, policies and practices, thus ensuring the limitation of detrimental impacts on the achievements of SDGs.

2. Mirova aims, for all its investments, to propose portfolios consistent with a climate trajectory of less than 2°C defined in the Paris Agreements of 2015, and systematically displays the carbon impact of its investments (excluding Social impact and Natural Capital funds), calculated from a proprietary methodology that may involve biases.

Executive Summary

Our teams have worked on the publication of an impact report for the Global Sustainable Equity Fund every year since 2020. The aim of this report is to detail, in a comprehensive and transparent way, how we believe our strategy has delivered on its impact objectives during the reporting year. The report is also an opportunity to update our clients on various milestones we have reached during the year and provide more qualitative details to illustrate the positive impact of our investment decisions.

Key takeaways for 2023:



Successful implementation of our sustainability research methodology enhancements



Reinforcement of our voting and engagement ambitions



Sustainability themes in focus:

- ▶ Climate stability
- ▶ Diversity and inclusion
- ▶ Adapting to strengthening risks

The information provided reflects Mirova's opinion / the situation as of the date of this document and are subject to change without notice.



LOUISE SCHREIBER

Head of Sustainability Research - Listed Markets

Strengthening our approach and advancing the market

2023 was not exempt from dramatic and extreme climate events or humanitarian crises, which have unfortunately become a recurring topic in our annual reports. Concerns over increasing inflation, a gloomy economic outlook and the polarization of public opinion have also led to an increased number of strikes and public protests worldwide, and may be putting democracy at risk in many countries. Yet, this only reinforces the relevance of our objective to invest in companies with strong fundamental quality and that have demonstrated their ability or ambitions to positively contribute to these challenges.

At the end of 2022, we enhanced our sustainability assessment methodology with the objectives of refining the tracking and measurement of the impact of our investments, reinforcing controversy risk management, and ensuring we are aligned with our own definition of sustainable investment as well as globally accepted definitions. With the fundamental principles of our philosophy and approach unchanged, the enhancements did not impact the portfolio construction process, and we continue to believe the enhancements assist with the identification of new opportunities to address market drivers and mitigate risks, while generating greater impact.

“Mirova strives to be leaders in sustainable finance. We believe this is illustrated by our efforts to define a robust and consistent sustainability framework and communicate our expectations with the companies we invest in.”

Our teams continuously put in effort to identify the players best addressing sustainability challenges, while aiming to limit as much as possible company size, sector, and geography biases. Individual company analysis and engagement have been, and continue to be, crucial to overcome these potential biases. We have strengthened our individual engagement efforts, which is helping us in defining and identifying advanced practices, in other words, the positive impact from how companies are designing, manufacturing, and delivering their products and services, taking into account their main stakeholders such as employees and suppliers.

Mirova also seeks for promotion of internationally accepted standards. For example, since 2019, Mirova has been an active member of the working groups that prefigured the creation of the Taskforce on Nature-Related Financial Disclosures (TNFD), showing steadfast support for this initiative. In the coming years, we will promote the adoption of the principles with our investee companies. In addition, the complexity of measuring biodiversity is a

“We continue to promote the adoption of commonly accepted sustainability standards and reporting frameworks, the development of new indicators and to advocate for a shared (and ambitious) definition of "sustainable investment".”

significant hurdle for investors who want to integrate nature-related metrics in their analysis. Adopting a parallel approach to climate, researchers have established the Mean Species Abundance (MSA) as a standard to measure biodiversity. In 2023, our teams also continued working to measure companies' impact on biodiversity based on this metric.

Finally, Mirova continues to advocate for the integrity of the sustainable investing market. We have notably taken position on the EU SFDR regulation, which we believe should be facilitating the development of sustainable investing while at the same time providing tools to the market to ensure the best transparency possible for investors and to avoid greenwashing.





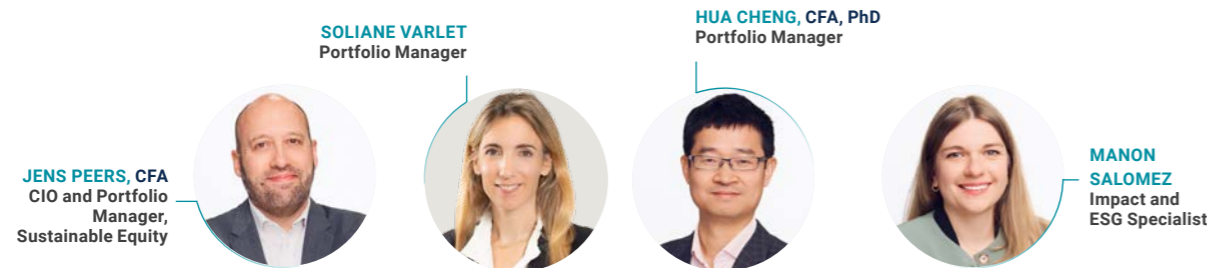
Contents

Foreword	2
Executive summary	5
2023 sustainability research highlights	6
Investment team and strategy overview.....	10
Contributing to the Sustainable Development Goals	12
Voting and engagement.....	14
Sustainability themes in focus for 2023:.....	16
Climate stability.....	17
Diversity and inclusion.....	20
Adapting to strengthening risks.....	22
2023 new portfolio additions.....	24

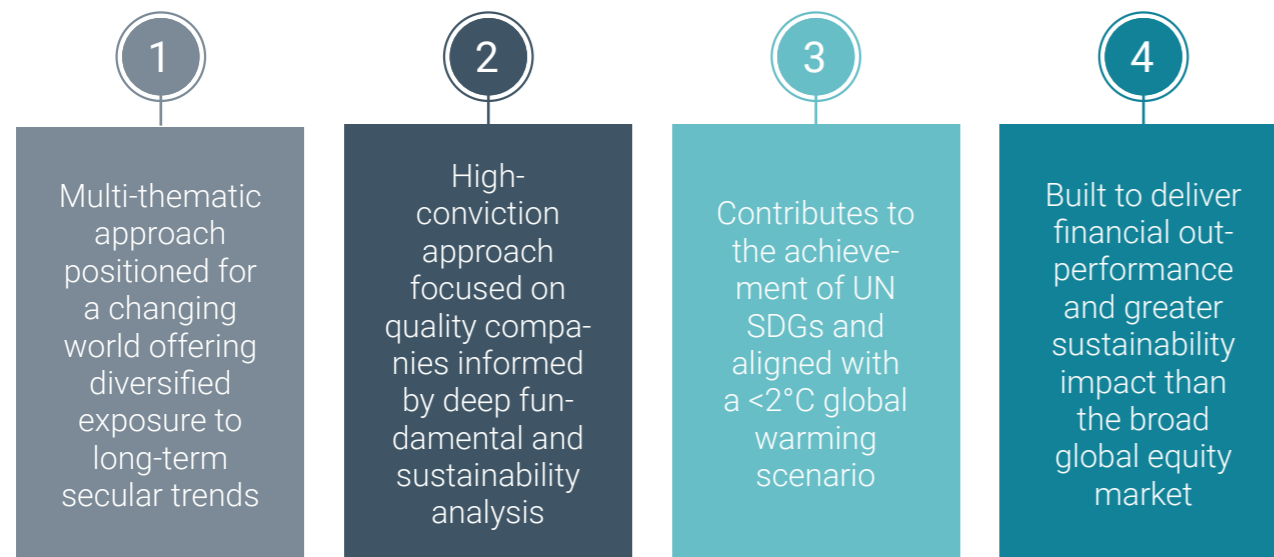
A high-conviction approach for a changing economy

Team overview

The Fund is managed by portfolio managers Jens Peers, Hua Cheng and Soliane Varlet through a team-based, disciplined decision-making process. They hold an average of over 20 years' experience, diverse backgrounds and experiences, and a robust track record in terms of strategy management and financial analysis. They are supported by an experienced team of Fundamental Equity Analysts and benefit from the expertise of Mirova's Sustainability Research Team, consisting of more than 20 members. Within this team, Manon Salomez is the Impact and ESG Specialist supporting the Mirova Global Sustainable Equity Fund.



Key strategy attributes



The information provided reflects Mirova's opinion / the situation as of the date of this document and are subject to change without notice.

Strategy overview: identifying sustainable companies in a transitioning economy

We believe that secular change is a powerful driver of investment returns over the long term, which is why we only invest in companies with meaningful exposure to economic tailwinds from the long-term transitions affecting the global economy over the next decade or longer. Our investment philosophy is centered on the conviction that four major transitions are shaping the global economy: demographic, environmental, technological, and governance. Trends related to generational shifts, urbanization, an aging population, digitalization, AI and automation, climate change, and shifting power dynamics are some of the driving factors behind these transitions. As long-term investors, we aim to access these structural growth drivers as efficiently as possible through strategically well-positioned, high-quality companies that will be part of a more sustainable and resilient economic model.

Among the companies that will benefit from these transitions, we seek to invest in those that are also aligned with and contribute positively to the UN Sustainable Development Goals ("SDGs"). As part of our sustainability assessment, we may identify positive contribution through:

- ▶ Involvement in **sustainable activities**: the development of products or provision of services

contributing to the sustainable development goals, such as clean transportation, low carbon energy, sustainable agriculture, or medical treatments.

- ▶ Demonstration of **advanced strategies/practices**: ensuring significant support for employees' and suppliers' development, supporting diversity across all management levels and business units, implementing robust decarbonization strategies or strategies to significantly reduce the company's pressure on biodiversity.

In addition, the sustainability assessment is completed with an analysis of the company's approach to mitigating its environmental, social and governance risks through a relevant corporate social responsibility strategy. This analysis results in a "Residual ESG risk" opinion, also used to prioritize our engagement activities.

We build portfolios constructed with companies we believe are well positioned to benefit from long-term economic themes and contribute to sustainable development. We are convinced this type of portfolio will generate financial outperformance over time with greater sustainability impact than the broad market – our dual objective.

Exposure to structural growth drivers & contributing to sustainable development

MAJOR TRANSITIONS RESHAPING OUR WORLD

Demographics

- ▶ Aging population
- ▶ Urbanization
- ▶ Growing middle class
- ▶ Generational shifts

Technology

- ▶ Artificial intelligence
- ▶ Digitalization
- ▶ Automation

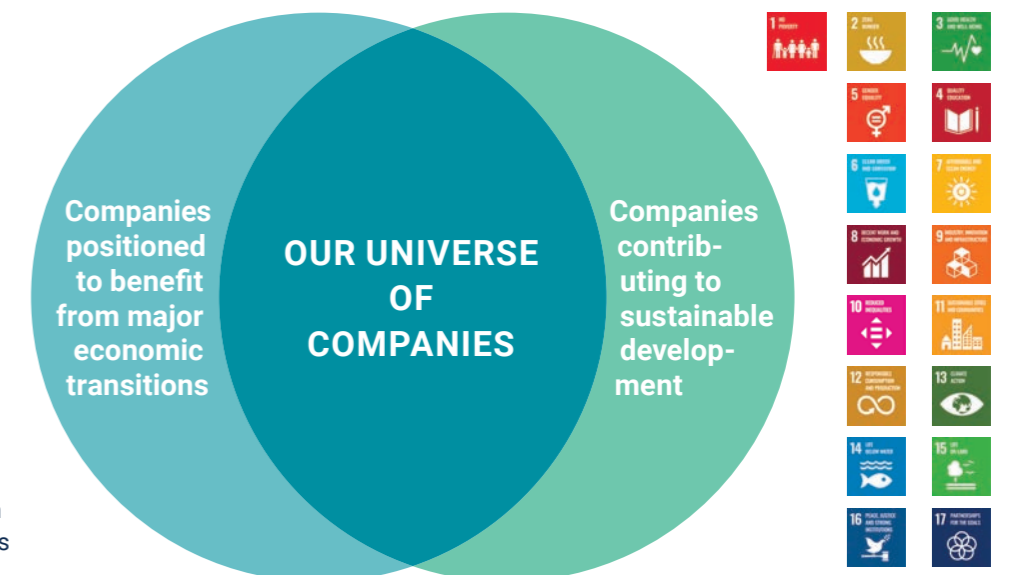
Environment

- ▶ Climate change
- ▶ Biodiversity
- ▶ Resource constraints

Governance

- ▶ Rethinking globalization
- ▶ Shifting power dynamics
- ▶ Human capital

SUSTAINABLE DEVELOPMENT GOALS



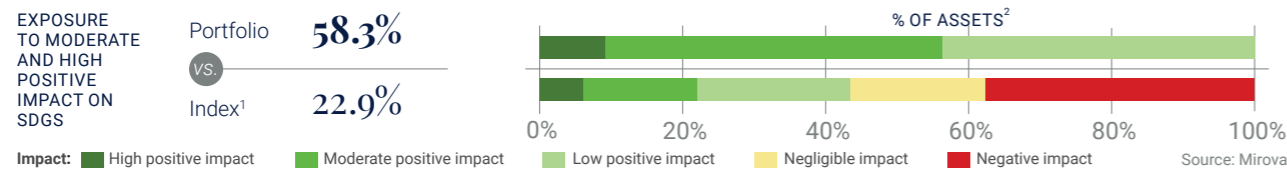
The information provided reflects Mirova's opinion / the situation as of the date of this document and is subject to change without notice.

Contributing to the Sustainable Development Goals

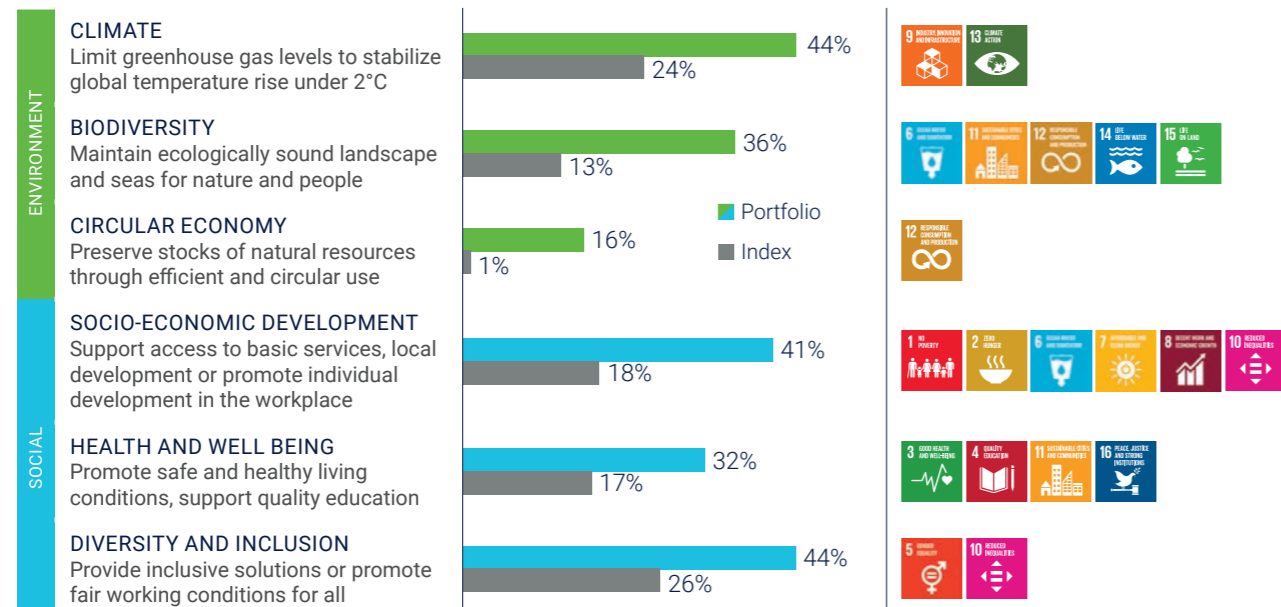
Mirova strives to invest only in companies considered as sustainable investments, in other words companies with a positive contribution to the United Nations' Sustainable Development Goals, avoiding companies whose activities or products have a negative or negligible impact on achieving the SDGs.

We have designed an Impact and ESG assessment framework that not only evaluates the financial consequences of ESG criteria but also reports on the environmental and social impact of the assets in which we invest. To do so, we rely on an in-depth analysis of a company's entire life cycle, from the extraction of raw materials to products' end of life. In addition, as different players face vastly different challenges from one sector to another and issues can even vary significantly within a sector, criteria for analysis are adjusted to meet the specificities of each asset studied.

Sustainability Impact Opinion Breakdown



Contribution to the SDGs



Contribution to the SDGs shows the percentage of portfolio/index companies by weight that are assessed as having High or Moderate Positive Impact on the six pillars.

1. The MSCI World Net Dividends Reinvested is a free-float-adjusted market capitalization weighted index that is designed to measure the equity performance of developed markets. The MSCI World Net Dividends Reinvested does not reflect the impact of fees and trading costs. It includes reinvestment of net dividends by market capitalizations.
 2. Cash and cash equivalent excluded. The Reference index does not intend to be consistent with the environmental or social characteristics promoted by the fund.
 Source: Mirova, as of 29/12/2023.

The information provided reflects Mirova's opinion / the situation as of the date of this document and are subject to change without notice.



Advocating for positive change through voting and engagement

45 engagements throughout the year with 33 companies

Source: Mirova

Since Mirova's inception, we have always believed that investors can influence market players not only through capital allocation, but also through individual and collective engagement. While responsible investment activities cannot be limited to this approach, engagement can produce tangible results, which is why we define engagement strategies across all asset classes. Our team of Impact and ESG specialists ensures that our engagements are consistent with our investment policy and maintains an ongoing dialogue with every company and individual project.

To foster sustainable value creation for all stakeholders, Mirova has developed a voting policy in line with its responsible investment strategy, which mainly addresses two of Mirova's engagement priorities: governance of sustainability and shared value creation. Outcomes of engagement actions undertaken by the analysts on other priorities also inform voting decisions.

Engagement objectives:

1

Leverage our internal expertise to help guide and build on companies' sustainability journeys

We engage with companies on a regular basis, promoting notably:

- ▶ Setting Science-Based Targets.
- ▶ Analysis of dependence risks and opportunities related to nature aligned with TNFD.
- ▶ Disclosures around career development and anticipation of the shift of certain skills, freedom of association mechanisms, employee engagement.
- ▶ Implementation of robust diversity and inclusion strategy.

25 engagements

2

Promote and share our vision of fair distribution of value

We engage with companies in the context of Annual General Meetings, supporting:

- ▶ Integration of sustainability criteria – assessed through pre-determined, quantifiable metrics – into variable compensation of top executives.
- ▶ Fair tax practices.
- ▶ Employee representation on the board and female representation in governance bodies.

10 engagements

3

Address sustainability-related concerns that warrant heightened awareness

Our targeted engagement program targets companies with high residual ESG risk or with exposure to complex industry-wide issues that require a multi-stakeholder approach. These engagements have specific goals and, where appropriate, are usually attached with specific targets and objectives.

10 engagements

Details of some of these engagements, including those on generative AI (NVIDIA and Microsoft) and GLP-1 drugs (Novo Nordisk and Eli Lilly), are also available in the section of the report titled "Adapting to strengthening risks".

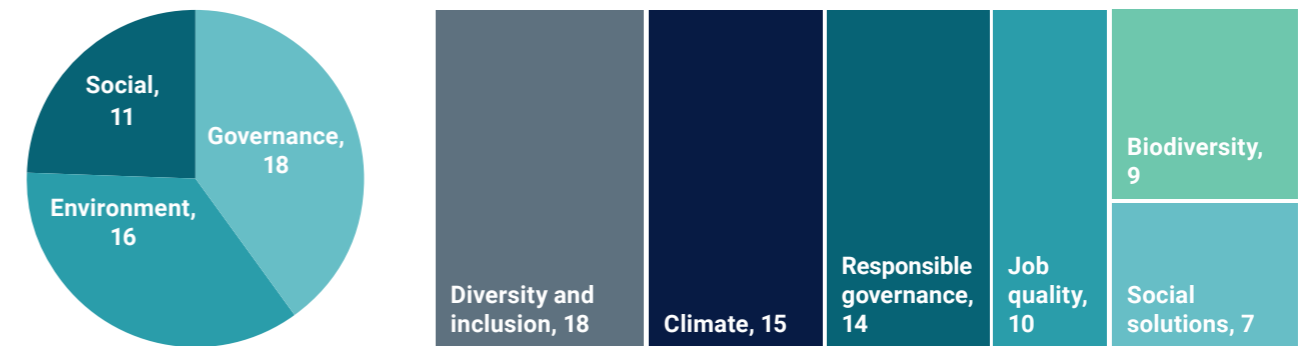
Source: Mirova.

The information provided reflects Mirova's opinion and are subject to change without notice. For more information on our methodologies and policies, please refer to our website: www.mirova.com

Engagement in action

Engagement

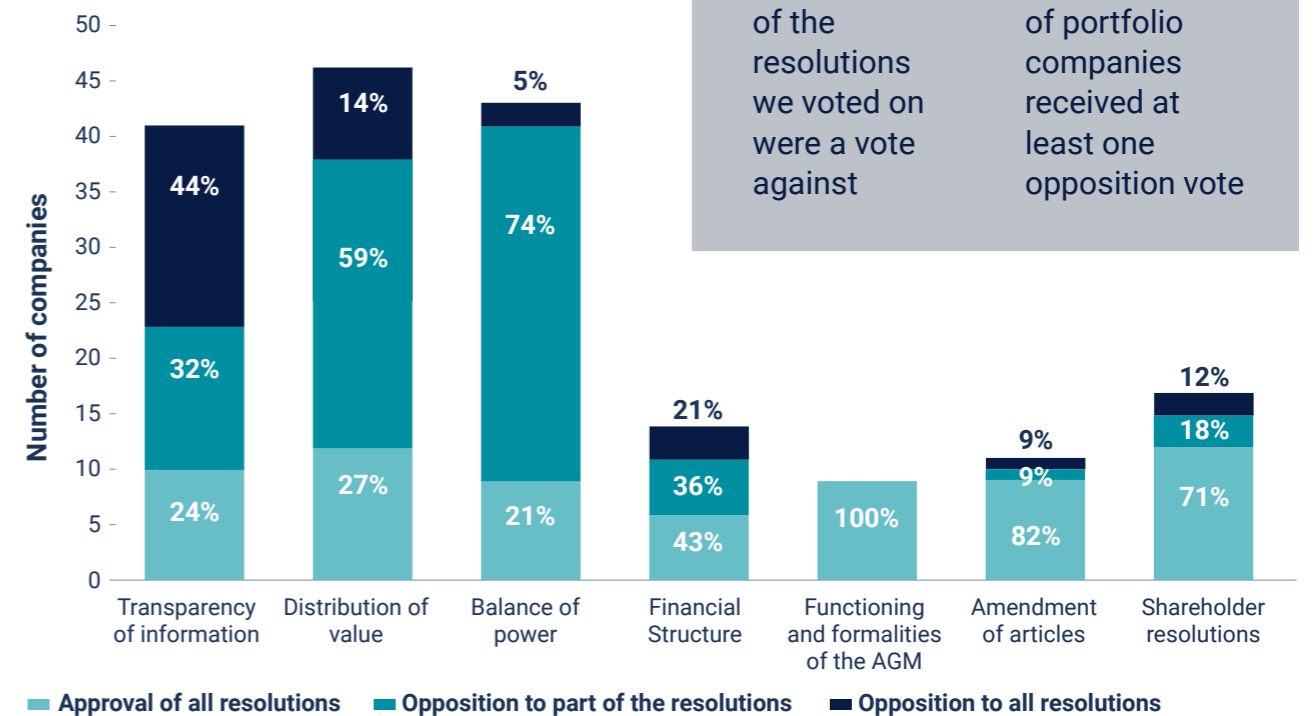
NUMBER OF ENGAGEMENTS BY CATEGORY AND THEME



Adds up to more than the total number of engagements as there may be multiple engagement themes within the E, S or G categories.

Voting

BREAKDOWN OF VOTES BY THEME IN 2023



45% of the resolutions we voted on were a vote against

96% of portfolio companies received at least one opposition vote

Source: Mirova.

The information provided reflects Mirova's opinion / the situation as of the date of this document and is subject to change without notice.

Sustainability themes in focus for 2023

1

Climate stability

2

Diversity and inclusion

3

Adapting to strengthening risks



1 Climate stability



Addressing climate change: an opportunity and a responsibility

Human activities have already contributed to an increase in global temperature of 1.1°C since the pre-industrial era (1850-1900)¹. This has strengthening and unprecedented consequences, including extreme temperatures, devastating droughts, flooding, and wildfires, and there is more and more evidence that environmental risks² are indeed putting the resilience of our economies at stake. 2.2°C of warming by 2050 has potential to reduce global GDP levels by up to 20%³.

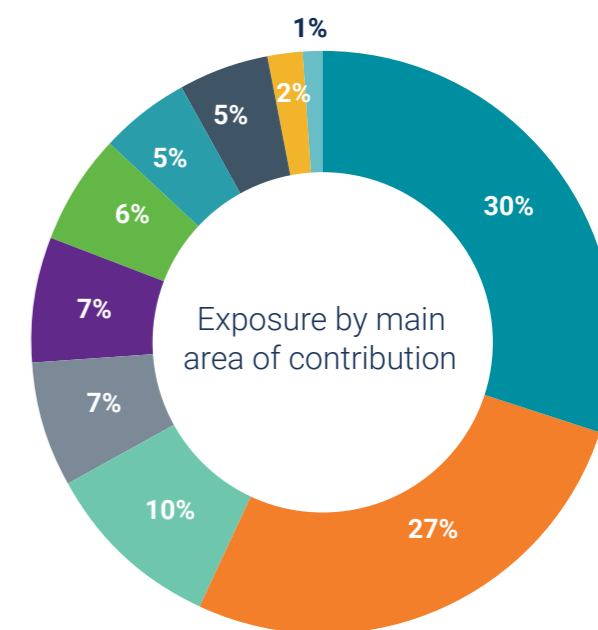
Companies offering solutions for climate change mitigation and adaptation such as those involved in the reduction of our dependency on fossil fuels (e.g. renewable energy, clean transportation, alternatives to plastics, etc.) or in the transition of our food systems towards more sustainable practices are key drivers of the broader Environmental Transition. They are also likely to benefit from long-term, secular growth tailwinds created by these trends and deliver stronger financial performance compared to players that are not able or willing to transition.

Reaching **net zero by 2050** requires low-carbon investments to rise from USD \$900 billion in 2020 to **USD \$5 trillion annually by 2030⁴**

PORTFOLIO EXPOSURE TO CLIMATE STABILITY

29%
of the portfolio contributes to climate stability⁵

- Wind
- Circular business models (reuse, upcycle)
- Advanced practices - climate
- Eco products and processes
- Green real estate
- Carbon emissions and energy efficiency
- Electric and hydrogen vehicles
- Sustainable agricultural practices
- Solar
- Water use efficiency



1. AR6 Synthesis Report Climate Change 2023 - IPCC
 2. WEF The Global Risks Report 2024 (weforum.org)
 3. The global economic costs of climate change inaction - Oxford Economics
 4. IMF, November 2023
 5. Includes only companies whose main sustainability contribution is on environment.

The information provided reflects Mirova's opinion / the situation as of the date of this document and is subject to change without notice.

Identifying contribution through activities and practices

To avoid the worst impacts of climate change, scientists have warned that that global greenhouse gas (GHG) emissions will need to be cut by nearly half by 2030¹. To do so, investing in low-carbon solutions is necessary, but all sectors bear the responsibility of implementing robust decarbonization strategies and supporting this objective.

Against this backdrop, we have defined two drivers for positive impact on climate change:



► Sustainable Activities

Sustainable activities are those that contribute to climate-related SDGs, mainly 7 and 13, such as low carbon energy, green building, and clean transportation.

► Portfolio in review: Air Liquide and Enphase Energy

In 2023, the team introduced Air Liquide and Enphase Energy to the portfolio, both supporting the climate transition. Enphase, as a provider of solar microinverters, contributes significantly to mitigating climate change by promoting renewable energy sources and the transition towards a more sustainable energy system. Air Liquide, a world leader in gases, technologies and services for the Industry and Health sectors, plays a key role in decarbonizing industry value chains.



► Advanced Practices

We believe all companies across every sector have a role to play in decarbonizing our economies. Companies implementing ambitious decarbonization strategies across scope 1, 2 and 3 carbon emissions with robust roadmaps – and, where possible, validated Science-Based Targets (or other credible standards) – are considered as having some level of positive impact on the climate.

► Portfolio in review: AstraZeneca

In 2023, the team added AstraZeneca to the portfolio, which, alongside the development of treatments, vaccines and medicines in oncology, biopharmaceuticals, and rare diseases, has demonstrated significant efforts in reducing its own carbon footprint and that of its supply chain. It is critical for the pharmaceutical sector to decarbonize, as it is currently responsible for 4.4% of global emissions and its carbon footprint is forecast to triple by 2050 if left unchanged².

1. Climate Change 2022: Mitigation of Climate Change - IPCC
2. Source: World Economic Forum.
Details on the companies are available in the Portfolio Additions section of this report.

Mirova analysis. The information provided reflects Mirova's opinion / the situation as of the date of this document and is subject to change without notice. This section details investments realized by Mirova in the framework of the Mirova Global Sustainable Equity Fund. The securities mentioned above are shown for illustrative purpose only and should not be considered as a recommendation or a solicitation to buy or sell.

Advocating for the climate transition

Despite these efforts, we acknowledge the difference in maturity across industries and geographies, which increases the importance of our engagement efforts on the matter.

In 2023, we conducted engagements with 15 companies to address climate related topics. On the topic of climate, we have prioritized engagement with companies that still need to provide more transparency on their decarbonization strategy or are operating in regions/industries that have historically lagged on this front. For example, financial and healthcare companies, especially outside of Europe, have been defining their decarbonization strategy just recently, and we believe sharing best practices and our expertise with them is a way to further our impact.



LINDSEY APPLE
Lead expert - Engagement and Proxy Voting

“Mirova welcomes the opportunity to vote on a company's climate transition plan because shareholders have a valuable role to play, supporting the establishment of best practices, and pushing for improvement.”

Say on Climate

The “Say on Climate” vote, which emerged in 2021, is a company's climate transition strategy presented by management for shareholder approval. Shareholders then cast a vote indicating their support or disapproval of the transition strategy based on their analysis of the plan.

Mirova's deep level of expertise on this matter is critical and allows for a credible and well-informed analysis and opinion, and therefore vote, on the quality of the climate transition plan. Historically, we have not supported plans that we do not believe are sufficiently rigorous. We encourage our portfolio companies to offer a proposal on the climate transition plan for its shareholders' approval and we will generally support shareholder proposals requesting such.

► **Portfolio in review:** in support of the plan specific to the Global Sustainable Equity Strategy, we reviewed one Say on Climate proposal at **Legal and General Group**. We considered the company's climate transition plan to be sufficiently robust enough to warrant a vote in support of the plan. In our view, the company's strategy is aligned with +1.5°C trajectory and we note that climate reduction targets are set for the short, medium, and long term and cover scopes 1, 2, and 3 emissions. However, we did note areas for potential improvement regarding the company's exclusion policy on sovereigns, and look to our engagement program to discuss this enhancement with the company.



MANUEL COESLIER
Climate and Environment expert

“At Mirova, we are convinced that the harmonization of market standards is necessary to promote a positive dynamic.”

The information provided reflects Mirova's opinion and are subject to change without notice. For more information on our methodologies and policies, please refer to our website: www.mirova.com

Measuring the footprint of our portfolio

Measuring our impact is key to ensuring we are on track to meet the challenges of transformation. Following the Paris Agreement in 2015, Mirova confirmed its intent to align each of our portfolios with a 2°C scenario or better, corresponding to carbon neutrality before 2070.

While the data currently shared by companies on their direct GHG emissions (scope 1) and estimated indirect emissions (scope 2 and 3) is based on solid methodological foundations, other metrics are needed to identify their respective contributions and to be able to compare solutions. Notably, it is critical to understand and measure the carbon emissions that can be avoided by an environmental solution. In order to address this challenge, **Mirova, alongside Robeco, has launched an initiative to standardize the calculation of avoided emissions** and selected I Care and Quantis to develop a global database of GHG emission avoidance factors, offering a standardized and transparent calculation of emissions avoided by an extensive list of low-carbon or green enabling solutions.

CLIMATE SCENARIO ALIGNMENT:

	Portfolio	Index
	<2°C	3-3.5°C
Induced emissions (tCO₂/M€ invested)	65	126
Avoided emissions (tCO₂/M€ invested)	22	8

- Fund coverage rate (% of holdings analysed): 100%
- Index coverage rate: 99%
Source: Mirova

2 Diversity and inclusion



Addressing inequalities to foster sustainable economies

Despite progress made over the past several decades, inequalities around the world continue to be a major concern. In recent years, the effects of the pandemic have widened income inequalities that disproportionately affect women and other underrepresented groups¹.

Not only is diversity imperative for women's empowerment, fairness, and social development, diversity within companies and the broader economy is a key element of our Governance and Demographics Transitions and creates economic opportunity. For instance, women control an increasing proportion of total global wealth and economic decision-making. Companies that recognize this reality within their own workforce and offer solutions are well positioned to benefit from this trend. Additionally, many studies have shown that improving female representation in leadership roles can have positive effects on organizational and economic performance, including more innovation, better knowledge of end customers that converts to increased sales, and better employee motivation and engagement, yielding improved retention rates and productivity.

However, across the corporate pipeline, women and especially women of color remain underrepresented. This underrepresentation, particularly in top-level management positions must be addressed.

44%
of the portfolio positively contributes to Diversity and Inclusion

\$12tn in additional GDP potential if the workforce gender gap is narrowed by 2025.

Identifying contribution through activities and practices

According to our sustainability research methodology, we value contribution from companies that promote diversity and inclusion, either through their products and services or through advanced practices.



► Sustainable Activities

Products and services such as childcare, female hygiene or dedicated healthcare, tailored financial services are considered as potential tools to support and empower women and minorities.



► Advanced Practices

Through their practices, companies have the ability to support all types of diversity across all levels and business units. Identifying advanced practices requires going beyond the simple analysis of women representation at management levels. We consider the specificities of different regions and industries. For example, industries that have historically attracted less women or minorities may be expected to implement measures to develop new talents and increase attractiveness (partnership with universities, review hiring process to remove biases, etc).

► Portfolio in review: Palo Alto Networks

In 2023, we added cybersecurity company Palo Alto Networks to the portfolio, which operates in a historically male-dominated field, but has implemented measures to develop and attract more women and minorities (including unconscious bias training, mentoring, Employee Resource Groups, paid parental leave, underrepresented talent programs, founding partner of Women in CyberSecurity). This strategy, supported by various representation targets, has already seen success as evidenced by the share of women at the management level, including at the executive committee level (25% vs 26% women in the global workforce) and in tech roles (21% women vs 19% for graduates in STEM in the U.S.).

1. World Economic Forum.

Mirova analysis. The information provided reflects Mirova's opinion / the situation as of the date of this document and is subject to change without notice. This section details investments realized by Mirova in the framework of the Mirova Global Sustainable Equity Fund. The securities mentioned above are shown for illustrative purpose only and should not be considered as a recommendation or a solicitation to buy or sell.



CAMILLE BARRÉ
Impact & ESG Specialist

“Headwinds in different parts of the world around diversity and inclusion have raised concerns over the willingness of companies to increase transparency on the topic. It's still our responsibility to engage and support companies' efforts in moving the needle on diversity and inclusion.”

Advocating for ambitious diversity and inclusion policies

While female representation at every level in companies in the fund is broadly aligned with the benchmark, efforts should be maintained to reach parity; most companies still have a long way to go in ensuring equality in the workplace, which includes narrowing the gender pay gap and removing unconscious barriers to career evolutions for women. Efforts should also be strengthened to address other underrepresented groups. Roughly one in five people in the world still experience discrimination with regards to their sex, but also due to their ethnicity, religion, age, disability, or sexual orientation, with higher prevalence of violence and harassment in high income countries.²

During the year, **we engaged with nine portfolio companies on the topic of diversity and inclusion**. Our engagements focused on the promotion of best practices regarding the implementation of unconscious bias trainings, gender pay gap, parental leave, succession planning and internal promotion, and sponsorship initiatives, and to advocate for inclusive policies. In addition, **Mirova participates in a variety of collaborative initiatives such as the 30% Club (France Investor Group) and Thirty Percent Coalition US**. The French 30% Club seeks to promote better gender diversity within the SBF 120's (French stock market index) executive management teams, whereas the Thirty Percent Coalition US focuses on increased gender, racial and ethnic diversity on corporate boards and in senior leadership.



WOMEN REPRESENTATION:

Average percentage of women in different levels of the workforce

	Portfolio	Index
Women in executive committees	21%	21%
Women in global workforce	36%	32%

Source: Mirova, Equileap

2. International Labour Organization, Experiences of violence and harassment at work: A global first survey. 2022.

The information provided reflects Mirova's opinion / the situation as of the date of this document and is subject to change without notice.

3 Adapting to strengthening risks

Mirova's framework for determining whether a company meets our definition of a sustainable investment includes the identification of drivers of positive contribution to sustainability goals, as well as an assessment of how companies are managing their sustainability risks. This approach aids in avoiding exposure to negative impacts and managing the potential financial implications of poor risk management practices. Our engagement strategy with individual companies (type of engagement, frequency of engagement, potential escalation) is notably driven by the company's residual risk level.

In 2023, the breakthrough of generative artificial intelligence (AI) and the market approval of new obesity drugs were both identified as triggers for emerging ESG risks for some companies in the portfolio. While the two issues are fundamentally different, there are similarities in the strategy Mirova adopted to monitor them. We acknowledge that the solutions themselves do not directly trigger these risks, but rather the misuse of them, which is what we have addressed in our engagement.

Promoting high ethical standards in AI

Generative AI had a breakout year in 2023, but it is not just hype. Generative AI offers the potential to unlock significant productivity and economic gains. According to McKinsey, across industries, generative AI has the potential to generate USD 3-5trn in incremental value from new generative AI use cases, with total AI economic potential of USD 17-25trn. We expect generative AI's impacts to ripple through most industries, though individual industries and companies are likely to embrace it at varying speeds. Regardless, generative AI is poised to upend how we think about various business functions, helping to optimize and automate various processes on one hand, and creating risks on the other. Alongside automation and productivity benefits and its ability to enable breakthrough innovation in healthcare or education, AI carries major societal risks that we immediately identified.

In 2023, we engaged with two companies on this topic: **Microsoft**, which is exposed through its partnership with OpenAI that notably led to the development of large-language model GPT-4, and **NVIDIA**, which is exposed through the development of hardware needed to accelerate the treatment of massive amounts of data and run generative AI applications.



GABRIELLE FERHAT
Impact & ESG Specialist

“We closely monitor and promote the implementation of ethical AI guidelines and governance structures through a dedicated targeted engagement roadmap to address the risks identified with this technology such as disinformation, exacerbating bias, threats to privacy or intellectual property rights infringement.”

Alleviating these risks requires the following mitigation measures:

- **Governance:** Development and publication of responsible AI principles for ethical and sustainable generative AI use, definition of appropriate AI governance mechanisms, notably with teams and leadership in charge of ethics and embedding the culture of responsible innovation at all levels of the organization.
- **Design:** Apply an “ethical by design approach” to decrease risks of bias and discrimination with diversified data sets, appropriate control for undesirable/false content. Ensure AI models and language are intelligible, especially in the context of strengthening regulatory requirements.
- **Communication:** Develop preventive communication to the public to make users aware of the potential risks of AI products and can use them beneficially.

Engagement with these two companies has been positive overall. We believe they have implemented immediate actions to monitor and address the risks such as the publication of responsible AI guidelines, the release of several transparency notes on the intended uses and capabilities of its AI services on its website, which goes along with the need for more transparency required by regulators. Moreover, both NVIDIA and Microsoft have set up an AI governance mechanism. Mirova also supported a share-

holder proposal at Microsoft regarding disinformation/bias risks regarding AI. We regularly monitor news related to the topic of generative AI and maintain an ongoing dialogue with the companies exposed to this technology as part of our engagement efforts. Finally, Mirova recently joined the second phase of the World Benchmarking Alliance's Collective Impact Coalition for Ethical AI, which is a collaborative engagement initiative across investors set to drive progress on companies' ethical AI initiatives.

Addressing the obesity epidemic, while preventing drug misuse

The breakthrough of GLP-1 in treating obesity was a major focus for investors in 2023. Worldwide obesity has nearly tripled since 1975, but very few people are treated medically today. In most cases, drug management in obesity is an option to consider after efforts to implement lifestyle changes and appropriate nutritional management. When weight reduction remains a struggle and comorbidities are putting the patient at risk, drugs may be an option if taken with appropriate medical support. In the past few years, two obesity drugs, Wegovy from Novo Nordisk and Zepbound from Eli Lilly were approved and distributed in several markets to address weight management.

As part of our engagement priorities for 2023, we identified **Novo Nordisk and Eli Lilly**, in particular to address concerns over off-label marketing/promotion of obesity and diabetes drugs. After several engagements with the companies, and based on the information currently available, we believe that measures implemented to address these risks are aligned with our ethical standards and common practices in the industry.

Through our dialogue, Novo Nordisk and Eli Lilly have detailed their efforts to keep the drug under the label use that has been approved by the FDA. Internal measures including sales trainings, audits, remuneration schemes and constant monitoring have been implemented to control

the risk. In our digital age, these drugs have been increasingly promoted on social media by unsolicited individuals, most of them not even patients. However, this remains out of the control of these companies, and public personalities advertising the drug as a weight-loss tool cannot be sued. This digitalization also implies the rise of counterfeit medicines sold on these platforms, a topic both companies are working on with authorities and by improving the serialization process.

As the penetration of both products continues, our teams will continue to monitor signals around potential misuse, safety, and supply concerns. In addition, we believe the next step of our engagement is to promote accessibility and affordability. For now, these drugs have been approved in a limited number of markets, and the reimbursement coverage is still limited. In the U.S., at the time of the publication of this report, obesity drugs are not covered by state programs, and the scale of reimbursement by commercial insurance is still unknown. Additionally, a vast majority of overweight or obese children live in developing countries, where the rate of increase has been more than 30% higher than that of developed countries. Globally, the disease disproportionately affects vulnerable populations, and our objective is to promote increased access to these life-saving drugs. Finally, tackling the obesity crisis does not only fall under the responsibility of pharmaceutical companies.

In 2022, 1 in 8 people globally were living with obesity and 2.5 billion adults were overweight. Of these, 890 million were living with obesity.¹



MANON SALOMEZ
Impact & ESG Specialist

“While medical treatment plays a role in addressing the global obesity pandemic, we must consider the risks, particularly as concerns over off-label use have arisen. Our responsibility is to ensure companies' marketing and distribution practices are aligned with our ethical standards. We also continue to advocate for healthy products and better nutrition policies.”

1. Obesity and overweight - WHO

Mirova analysis. The information provided reflects Mirova's opinion / the situation as of the date of this document and is subject to change without notice. This section details investments realized by Mirova in the framework of the Mirova Global Sustainable Equity Fund. The securities mentioned above are shown for illustrative purpose only and should not be considered as a recommendation or a solicitation to buy or sell.

2023 new portfolio additions

In 2023, we added 5 companies to the portfolio: Air Liquide, Enphase Energy, AstraZeneca, Waste Management and Palo Alto Networks.



Mirova analysis. The information provided reflects Mirova's opinion / the situation as of the date of this document and is subject to change without notice. This section details investments realized by Mirova in the framework of the Mirova Global Sustainable Equity Fund. The securities mentioned above are shown for illustrative purpose only and should not be considered as a recommendation or a solicitation to buy or sell. The security shown was chosen because it was a new addition to the portfolio in 2023. Key figures source: company reporting.

Air Liquide

MODERATE POSITIVE IMPACT

- ▶ **Residual ESG Risk Opinion: Medium**
Residual ESG risk
- ▶ **Impact KPIs: 20% of revenues from industrial efficiency activities**



7 AFFORDABLE AND CLEAN ENERGY



13 CLIMATE ACTION



5 GENDER EQUALITY

TRANSITION: ENVIRONMENT

The EU aims to cut greenhouse gas emissions by at least 55% and the U.S. aims to cut emissions by 50-52% by 2030. Estimated \$5tr annual investment in low-carbon solutions required from 2030 to reach net zero by 2050 and limit global warming to 1.5°C. Global demand for low-emissions hydrogen expected to more than triple by 2050 if nations adhere to announced pledges¹.

COMPANY DESCRIPTION

A world leader in gases, technologies and services for Industry and Health. Oxygen, nitrogen and hydrogen are essential small molecules for life, matter and energy and are at the core of the company's activities.

KEY DRIVERS OF POSITIVE IMPACT

Contributes to climate change mitigation due to ambitious GHG emissions reduction trajectory for industrial gases enabling downstream industries in the low-carbon transition. The company also generates positive impact thanks to its proactive training, comprehensive engagement framework with employees and promotion of women in leadership roles.

RESIDUAL RISK OPINION

Air Liquide is exposed to typical industry-related risks such as climate risks and environmental degradations, explosive materials, workers safety, suppliers' human rights compliance risks and human resources risks. The company has implemented robust management systems in this regards that could be improved with factoring in water dependence over the whole energy value chain, reduced exposure to the oil&gas industry, particularly in Europe and the Middle East.

1. Source : IMF, IEA and Mirova

Enphase Energy

HIGH POSITIVE IMPACT

- ▶ **Residual ESG Risk Opinion: Medium**
Residual ESG risk
- ▶ **Impact KPIs: 100% of revenues from low carbon energy solutions**



7 AFFORDABLE AND CLEAN ENERGY



13 CLIMATE ACTION

TRANSITION: ENVIRONMENT

The EU aims to cut greenhouse gas emissions by at least 55% and the US aims to cut emissions by 50-52% by 2030. Estimated \$5tr annual investment in low-carbon solutions required from 2030 to reach net zero by 2050 and limit global warming to 1.5°C. Under-penetration of solar in the U.S. market and expected strong growth.

COMPANY DESCRIPTION

Solar power equipment and technology company offering solar microinverters, monitoring and storage solutions.

KEY DRIVERS OF POSITIVE IMPACT

Contributes significantly to mitigating climate change by promoting renewable energy sources and the transition towards a more sustainable energy system.

RESIDUAL RISK OPINION

As Enphase Energy focuses on the sale of small-scale solar system components and power management software, and not on the installation of its systems, its main sustainability risks are linked to suppliers and setting environmental and social standards within its supply chain. It mainly contracts with a Singaporean electronics contract manufacturer, to manufacture the majority of its components, in Mexico and, since 2023, in Romania. The supplier standards seem in line with international conventions, and we believe these practices and policies effectively mitigate concerns linked to Enphase's supply chain.

Source: Mirova

Mirova analysis. The information provided reflects Mirova's opinion / the situation as of the date of this document and is subject to change without notice. This section details investments realized by Mirova in the framework of the Mirova Global Sustainable Equity Fund. The securities mentioned above are shown for illustrative purpose only and should not be considered as a recommendation or a solicitation to buy or sell. The security shown was chosen because it was a new addition to the portfolio in 2023. Key figures source: company reporting.

AstraZeneca

HIGH POSITIVE IMPACT

- ▶ **Residual ESG Risk Opinion: Medium Residual ESG risk**
- ▶ **Impact KPIs: 100% of sales from medical solutions**



TRANSITION: DEMOGRAPHICS

The pace of population aging is much faster than in the past. Between 2015 and 2050, the proportion of the world's population over 60 years will nearly double from 12% to 22%. Rising life expectancy and lifestyle trends lead to rising rates of various health conditions such as diabetes and obesity, cancer and the emergence of novel diseases.

COMPANY DESCRIPTION

Develops, manufactures, and commercializes prescription medicines for Oncology, Cardiovascular, Renal & Metabolic (CVRM), Respiratory & Immunology, and Rare Disease.

KEY DRIVERS OF POSITIVE IMPACT

Product portfolio contributes to tackling global health challenges, and addresses access to medicine in developing regions, expanding the coverage of its portfolio with equitable pricing strategies over time. Also contributes through robust diversity & inclusion and environmental strategies.

RESIDUAL RISK OPINION

As a pharmaceutical company, AstraZeneca faces various risks related to product safety, pricing, human resources or environmental impacts. Business ethics is one of the major risks faced by pharmaceuticals companies of this scale, and includes various topics such as corruption, bioethics, off-label marketing or relations with healthcare representatives. Overall, AZ is one of the industry leaders in terms of sustainability performance and transparency. The company has been proactive and seems quite engaged in research and studies to understand the impact of its activities at a large and comprehensive scope (both on social and environmental issues).

Palo Alto Networks

LOW POSITIVE IMPACT

- ▶ **Residual ESG Risk Opinion: Low Residual ESG risk**
- ▶ **Impact KPIs:**
 - 25% women in executive committee and 26% in global workforce
 - Targeting 40% women in total workforce by 2025



TRANSITION: TECHNOLOGY

Secular trends such as digitalization, AI and data proliferation, and increasing sophistication of cyberattacks increase the need for cybersecurity solutions, with annual damage from cyberattacks estimated to reach \$10.5 trillion by 2025 – a 300% increase from 2015 levels.

COMPANY DESCRIPTION

Global cybersecurity company that offers a comprehensive security platform addressing network security, cloud security, and the operations center to prevent cyber attacks.

KEY DRIVERS OF POSITIVE IMPACT

Contributes mainly through its advanced practices on diversity and inclusion that promote equal opportunities and diversity in its workforce. The company has a strong share of women in the executive committee and global workforce as well as ambitious group-wide targets and oversight at the Board level.

RESIDUAL RISK OPINION

Palo Alto is primarily a software company, hence main ESG issues are data privacy and security, data centers' efficiency and human capital management. However, due to its hardware offering, the company is also exposed to some extent to risks in its supply-chain..

Source: McKinsey

Waste Management

LOW POSITIVE IMPACT

- ▶ **Residual ESG Risk Opinion: Medium Residual ESG risk**
- ▶ **Impact KPIs:**
 - Capacity to recycle 12% of waste, with strong targets to increase circularity
 - 45% beneficial use of captured landfill gas in 2022, target 65% by 2030



TRANSITION: ENVIRONMENT

Solid waste is a commodity and grows with the population and economy. In 2018, the U.S. generated 292.4 million tons of municipal solid waste, an increase of 40% from 1990, with only 23% of waste recycled.

COMPANY DESCRIPTION

Largest environmental solutions provider in North America, providing collection services, material recovery facility (MRF), or disposal site; and owns, develops, and operates landfill gas-to-energy facilities in the US, as well as owns and operates transfer stations.

KEY DRIVERS OF POSITIVE IMPACT

Contributes to biodiversity and circularity through its solutions such as waste sorting for recycling and composting of organic wastes as well as landfill gas capture. Also contributes through strong diversity practices, creating career opportunities for women and ensuring strong representation of women in the executive committee, which demonstrates career mobility.

RESIDUAL RISK OPINION

WM is exposed to usual waste management industry risks, which include climate warming impact of leaked methane emissions, water and air pollutions from leachate and toxic gases, workers' safety risks due to waste handling. Eventually there exists supplier unsustainable practices risks and business ethics risks due to local government waste management concession contracting. The company is expected to continue to improve working conditions and workers' safety as well as to implement a more robust climate target, particularly related to biomethane production.

Source: EPA and Mirova



Mirova analysis. The information provided reflects Mirova's opinion / the situation as of the date of this document and is subject to change without notice. This section details investments realized by Mirova in the framework of the Mirova Global Sustainable Equity Fund. The securities mentioned above are shown for illustrative purpose only and should not be considered as a recommendation or a solicitation to buy or sell. The security shown was chosen because it was a new addition to the portfolio in 2023. Key figures source: company reporting.

Mirova analysis. The information provided reflects Mirova's opinion / the situation as of the date of this document and is subject to change without notice. This section details investments realized by Mirova in the framework of the Mirova Global Sustainable Equity Fund. The securities mentioned above are shown for illustrative purpose only and should not be considered as a recommendation or a solicitation to buy or sell. The security shown was chosen because it was a new addition to the portfolio in 2023. Key figures source: company reporting.

Sustainability Research Team

Dedicated Impact & ESG specialists with complementary expertise

LOUISE SCHREIBER
Head of sustainability research - listed markets

MATHILDE DUFOUR
Head of sustainability research

SARAH MAILLARD
Head of sustainability research – private markets

GABRIELLE FERHAT
Information and Communication Technologies

HADRIEN GAUDIN-HAMAMA
Resources and biodiversity

CAMILLE BARRÉ
Mobility and diversity

CORINNA HORNWALL
Renewable energy in emerging markets

EVA L'HOMME
Energy transition infrastructures

KENZA LAHBABI
Environmental Technologies

FELIPE GORDILLO
Finance and sustainability bonds

MANON SALOMEZ²
Healthcare and decent work

JEAN-PIERRE DMIRDJIAN
Energy and climate change

AMANDINE CARRAGE
Conservation and restoration

XAVIER COLLET
Sustainable land use and agriculture

ANTOINE ROUGIER^{3/4}
Technical officer, sustainable ocean fund

LINDSEY APPLE²
Proxy voting and engagement

LOUIS WUYAM
Sustainability bonds

ANTOINE FABRE
Impact & ESG analyst

KEVIN WHITTINGTON-JONES³
Sustainable ocean use and forestry

NOREEN OLOYA¹
Impact & ESG analyst

MANUEL COESLIER
Climate and Environment expert

MATHILDE KRIEF
ESG Data Specialist

1. Mirova Sunfunder East Africa, based in Nairobi. 2. Mirova US. 3. Mirova UK Ltd. 4. Antoine Rougier is also part of a Natural Capital fund investment team. The research team is composed of people from Mirova and its affiliates.

The information provided reflects Mirova's opinion / the situation as of the date of this document and are subject to change without notice.

Sustainable Equity Team

Building high-conviction, diversified multi-thematic portfolios

HUA CHENG⁴, CFA, PHD
Portfolio Manager
Boston

JENS PEERS, CFA
CIO and Portfolio Manager, Sustainable Equity
Boston

SOLIANE VARLET
Portfolio Manager
Paris

RONALD PETITJEAN
Portfolio Manager & Analyst
Paris

SCOTT PITTSLEY, CFA
Associate Portfolio Manager
Boston

JOSEPH TOSCANO, CFA
Equity Analyst
Boston

SHAWN KUMAR
Equity Analyst
Boston

CHEN CHENG
Equity Analyst
Paris

JOHN BOYLE, CFA
Equity Analyst
Boston

CINDY HUANG
Equity Analyst
Boston

MARINE MICHIELS
Equity Analyst
Paris

CLARICE AVERY, CFA
Client Portfolio Manager
Boston

IGNACE NGUYEN⁵
Client Portfolio Manager, Listed Assets (APAC)
Singapore

4. Hua Cheng is contracted by Mirova & seconded to Mirova US. Mirova US & Mirova agreed on a participating affiliate agreement.

5. Ignace Nguyen is based in Natixis IM Singapore and dedicated to the Mirova Division.

This organization is effective as of January 1st 2024. The information provided reflects the situation as of the date of this document & is subject to change without notice. Source: Mirova.

The information provided reflects Mirova's opinion / the situation as of the date of this document and is subject to change without notice.

Fund overview

\$5.2 bn
fund AUM

\$10.6 bn
total strategy
AUM

FUND CHARACTERISTICS

Strategy Inception Date	October 31, 2013
Investment Objective	To outperform the MSCI World Net Total Return Index, through investments in companies whose activities are linked to sustainable investment themes, over a minimum recommended investment horizon of five years.
Benchmark	MSCI World Net Total Return Index ¹
SFDR Classification	Article 9
Recommended Investment Timeline	5 years
Summary Risk Indicator (SRI)²	4/7

Reference to a ranking, a label and/or an award does not indicate the future performance of the UCITS/AIF or the fund manager.

For more information about labels please refer to the end of this document.



Top 10 holdings by Weight as of December 29, 2023

	STOCKS	PORTFOLIO	SUSTAINABILITY IMPACT OPINION	RESIDUAL ESG RISK LEVEL
Top 5 23%	1 MASTERCARD INC	4.9%	Low	▶ Medium
	2 ADOBE INC	4.6%	Low	▶ Low
	3 MICROSOFT CORP	4.6%	Low	▶ High
	4 NVIDIA CORP	4.4%	Low	▶ High
	5 NOVO NORDISK A/S	4.1%	Moderate	▶ Medium
Top 10 41%	6 THERMO FISHER SCIENTIFIC INC	3.9%	Moderate	▶ Medium
	7 EBAY INC	3.8%	Moderate	▶ Medium
	8 ECOLAB INC	3.7%	Moderate	▶ High
	9 ROPER TECHNOLOGIES INC	3.5%	Moderate	▶ Medium
	10 ELI LILLY & CO	3.3%	Moderate	▶ Medium

The reported data reflect Mirova's opinion / the situation as of the date of this document and are subject to change without notice. Distribution by weight. Market capitalization in €bn. For more information about ESG Investing Risk & Methodological limits, please refer to the risk section of this presentation, and more specifically, "ESG Investing Risk & Methodological limits" of this presentation. The ESG analysis methodology was reinforced in January 2023. For more information on this methodology, please visit our Mirova website: www.mirova.com/en/research/understand. Source: Natixis Investment Managers International

Fund risks

The "Summary Risk Indicator" (SRI), as defined by the PRIIPs regulation, is a risk measure based on both market risk and credit risk. It is based on the assumption that you stay invested in the fund for the recommended holding period. It is calculated periodically and may change over time. The indicator is presented on a numerical scale from 1 (the lowest risk) to 7 (the highest risk).

SRI: 4/7

This ranking on the synthetic risk indicator scale is due to its exposure to the international equity markets.

- ▶ Historical data may not be a reliable indication for the future
- ▶ The risk category shown is not guaranteed and may shift over time
- ▶ There is no capital guarantee or protection on the value of the Sub-Fund
- ▶ The lowest category does not mean "risk free"

The following risks may not be fully captured by the risk and reward indicator: **Liquidity risk, Sustainability risk.**

Further investment risks are set out in the "Principal risks" section of the Prospectus.

Liquidity risk

Liquidity risk represents the price reduction which the UCITS should potentially accept to have to sell certain securities for which there is one insufficient request on the market.

Sustainability risk

The Fund is subject to sustainability risks as defined in the Regulation 2019/2088 (article 2(22)) by environmental, social or governance event or condition that, if it occurs, could cause an actual or a potential material negative impact on the value of the investment. More information on the framework related to the incorporation of sustainability risks can be found on the website of the Management Company and the Delegated Investment Manager.

ESG Investing Methodological Limits - By using ESG criteria in the investment policy, the relevant Fund's objective would in particular be to better manage sustainability risk. ESG criteria may be generated using the Delegated Investment Manager's proprietary models, third party models and data or a combination of both. The assessment criteria may change over time or vary depending on the sector or industry in which the relevant issuer operates. Applying ESG criteria to the investment process may lead the Delegated Investment Manager to invest in or exclude securities for non-financial reasons, irrespective of market opportunities available. ESG data received from third parties may be incomplete, inaccurate or unavailable from time to time. As a result, there is a risk that the Delegated Investment Manager may incorrectly assess a security or issuer, resulting in the incorrect direct or indirect inclusion or exclusion of a security in the portfolio of a Fund.





Created by the French Ministry of Finance in early 2016, with the support of Asset Management professionals, the public "Investissement Socialement Responsable" (ISR) Label aims at giving Socially Responsible Investment (SRI) management an extra visibility with savers. It will make easier for investors to identify financial products integrating Environmental, Social, and Governance (ESG) criteria into their investment process. www.lelabelisr.fr



Febelfin developed a quality standard in February 2019 to ensure clarity and transparency regarding sustainable investments. The "Towards-Sustainability" label was developed by the association representing the banking sector in Belgium. Methodology available on www.towardssustainability.be/en/quality-standard

LEGAL MENTION

This document is intended for non-professional and professional clients as defined by MiFID for information purposes only.

Mirova Global Sustainable Equity Fund is a sub-fund of the Luxembourg SICAV Mirova Funds, approved by the Luxembourg Commission for the Supervision of the Financial Sector (the "CSSF"). Natixis Investment Managers International is the management company and has delegated financial management to Mirova US.

This fund is the subject of a key information document (KID) and of a prospectus. The KID of the fund must be delivered prior to any subscription. The reference documents on the fund (KID, prospectus and periodical document) are available at Mirova. You can obtain it on simple request and on the website www.mirova.com.

The investment presents a risk of capital loss. The specific risks of investing in the Sub-Fund are linked to: Capital loss, Equity securities, Global Investing, Exchange rates, Changes in laws and/or tax regimes, Portfolio concentration, Small, Mid and Large Capitalization Companies, Emerging markets, Financial Derivatives, Counterparty risk, ESG Investing Risk & Methodological limits, Sustainability risks. For more information, please refer to the prospectus on the fund available at Mirova. You can obtain it on simple request or on the website www.mirova.com.

Otherwise, past performance is no guarantee or reliable indicator of current or future performance. Performance figures are calculated net management and running fees, included safekeeping fees and commissions.

This document is a non-contractual document for information purposes only. This document does not constitute or form part of any offer, or solicitation, or recommendation to subscribe for, or buy, or concede any shares issued or to be issued by the funds managed by Mirova investment management company. The presented services do not take into account any investment objective, financial situation or specific need of a particular recipient. Mirova shall not be held liable for any financial loss or for any decision taken on the basis of the information contained in this document, and shall not provide any consulting service, notably in the area of investment services.

The information contained in this document is based on present circumstances, intentions and guidelines, and may require subsequent modifications. Although Mirova has taken all reasonable precautions to verify that the information contained in this document comes from reliable sources, a significant amount of this information comes from publicly available sources and/or has been provided or prepared by third parties. Mirova bears no responsibility for the descriptions and summaries contained in this document. No reliance may be placed for any purpose whatsoever on the validity, accuracy, durability or completeness of the information or opinion contained in this document, or any other information provided in relation to the fund.

This presentation contains forward-looking information which may be identified by the use of the following terms: "anticipate", "believe", "may", "expect", "intend to", "can", "plan", "potential", "project", "search", "should", "will", "could", including in their negative form, as well as any variations or similar terms.

This forward-looking information reflects current opinions regarding current and future events and circumstances and is no guarantee by Mirova of the fund's future performance. It is subject to risks, uncertainties and hypotheses, including those related to the evolution of business, markets, exchange and interest rates; economic, financial, political and legal circumstances as well as any other risk linked to the fund's activity. On account of these several risks and uncertainties, the actual results may substantially differ from the information contained in the forward-looking statements. Any financial information regarding prices, margins or profitability is informative and subject to changes at any time and without notice, especially depending on market circumstances. Mirova makes no commitment to update or revise any forward-looking information, whether due to new information, future events or any other reason.

The information contained in this document is the property of Mirova. It may not be communicated to third parties without the prior written consent of Mirova. It may not be copied, in part or in whole, without the prior written consent of Mirova. The distribution, possession or delivery of this document in some jurisdictions may be limited or prohibited by law. Persons receiving this document are asked to learn about the existence of such limitations or prohibitions and to comply with them. Mirova voting and engagement policy as well as transparency code are available on its website: www.mirova.com.

Non-contractual document, written in April 2024.

Mirova aims, for all its investments, to propose portfolios consistent with a climate trajectory of less than 2°C defined in the Paris Agreements of 2015, and systematically displays the carbon impact of its investments (excluding Social impact and Natural Capital funds), calculated from a proprietary methodology that may involve biases.

ESG INVESTING RISK & METHODOLOGICAL LIMITS

By using ESG criteria in the investment policy, the relevant Mirova strategies' objective would in particular be to better manage sustainability risk and generate sustainable, long-term returns. ESG criteria may be generated using Mirova's proprietary models, third party models and data or a combination of both. The assessment criteria may change over time or vary depending on the sector or industry in which the relevant issuer operates. Applying ESG criteria to the investment process may lead Mirova to invest in or exclude securities for non-financial reasons, irrespective of market opportunities available. ESG data received from third parties may be incomplete, inaccurate or unavailable from time to time. As a result, there is a risk that Mirova may incorrectly assess a security or issuer, resulting in the incorrect direct or indirect inclusion or exclusion of a security in the portfolio of a Fund. For more information on our methodologies, please refer to our Mirova website: www.mirova.com/en/sustainability

DISCLAIMER

This material has been provided for information purposes only to investment service providers or other Professional Clients, Qualified or Institutional Investors and, when required by local regulation, only at their written request. This material must not be used with Retail Investors.

To obtain a summary of investor rights in the official language of your jurisdiction, please consult the legal documentation section of the website (im.natixis.com/intl/intl-fund-documents)

In the E.U.: Provided by Natixis Investment Managers International or one of its branch offices listed below. Natixis Investment Managers International is a portfolio management company authorized by the Autorité des Marchés Financiers (French Financial Markets Authority - AMF) under no. GP 90-009, and a public limited company (société anonyme) registered in the Paris Trade and Companies Register under no. 329 450 738. Registered office: 43 avenue Pierre Mendès France, 75013 Paris. Germany: Natixis Investment Managers International, Zweigniederlassung Deutschland (Registration number: HRB 129507): Senckenberganlage 21, 60325 Frankfurt am Main. Italy: Natixis Investment Managers International Succursale Italiana, Registered office: Via San Clemente 1, 20122 Milan, Italy. Netherlands: Natixis Investment Managers International, Netherlands (Registration number 000050438298). Registered office: Stadsplateau 7, 3521AZ Utrecht, the Netherlands. Spain: Natixis Investment Managers International S.A., Sucursal en España, Serrano n°90, 6th Floor, 28006 Madrid, Spain. Sweden: Natixis Investment Managers International, Nordics Filial (Registration number 516412-8372- Swedish Companies Registration Office). Registered office: Covendrum Stockholm City AB, Kungsgatan 9, 111 43 Stockholm, Box 2376, 103 18 Stockholm, Sweden.

Or, provided by Natixis Investment Managers S.A. or one of its branch offices listed below. Natixis Investment Managers S.A. is a Luxembourg management company that is authorized by the Commission de Surveillance du Secteur Financier and is incorporated under Luxembourg laws and registered under n. B 115843. Registered office of Natixis Investment Managers S.A.: 2, rue Jean Monnet, L-2180 Luxembourg, Grand Duchy of Luxembourg. Belgium: Natixis Investment Managers S.A., Belgian Branch, Gare Maritime, Rue Picard 7, Bte 100, 1000 Bruxelles, Belgium.

In Switzerland: Provided for information purposes only by Natixis Investment Managers, Switzerland Sàrl, Rue du Vieux Collège 10, 1204 Geneva, Switzerland or its representative office in Zurich, Schweizergasse 6, 8001 Zürich.

In the British Isles: Provided by Natixis Investment Managers UK Limited which is authorised and regulated by the UK Financial Conduct Authority (register no. 190258) - registered office: Natixis Investment Managers UK Limited, One Carter Lane, London, EC4V 5ER. When permitted, the distribution of this material is intended to be made to persons as described as follows: in the United Kingdom: this material is intended to be communicated to and/or directed at investment professionals and professional investors only; in Ireland: this material is intended to be communicated to and/or directed at professional investors only; in Guernsey: this material is intended to be communicated to and/or directed at only financial services providers which hold a license from the Guernsey Financial Services Commission; in Jersey: this material is intended to be communicated to and/or directed at professional investors only; in the Isle of Man: this material is intended to be communicated to and/or directed at only financial services providers which hold a license from the Isle of Man Financial Services Authority or insurers authorised under section 8 of the Insurance Act 2008.

In the DIFC: Provided in and from the DIFC financial district by Natixis Investment Managers Middle East (DIFC Branch) which is regulated by the DFSA. Related financial products or services are only available to persons who have sufficient financial experience and understanding to participate in financial markets within the DIFC, and qualify as Professional Clients or Market Counterparties as defined by the DFSA. No other Person should act upon this material. Registered office: Unit L10-02, Level 10, JCD Brookfield Place, DIFC, PO Box 506752, Dubai, United Arab Emirates.

In Taiwan: Provided by Natixis Investment Managers Securities Investment Consulting (Taipei) Co., Ltd., a Securities Investment Consulting Enterprise regulated by the Financial Supervisory Commission of the R.O.C. Registered address: 34F., No. 68, Sec. 5, Zhongxiao East Road, Xinyi Dist., Taipei City 11065, Taiwan (R.O.C.), license number 2020 FSC SICE No. 025, Tel. +886 2 8789 2788.

In Singapore: Provided by Natixis Investment Managers Singapore Limited (NIM Singapore) having office at 5 Shenton Way, #22-05/06, UIC Building, Singapore 068808 (Company Registration No. 199801044D) to distributors and qualified investors for information purpose only. NIM Singapore is regulated by the Monetary Authority of Singapore under a Capital Markets Services Licence to conduct fund management activities and is an exempt financial adviser. Mirova Division (Business Name Registration No.: 53431077W) and Ostrum Division (Business Name Registration No.: 53463468X) are part of NIM Singapore and are not separate legal entities. This advertisement or publication has not been reviewed by the Monetary Authority of Singapore.

In Hong Kong: Provided by Natixis Investment Managers Hong Kong Limited to professional investors for information purpose only.

In Australia: Provided by Natixis Investment Managers Australia Pty Limited (ABN 60 088 786 289) (AFSL No. 246830) and is intended for the general information of financial advisers and wholesale clients only. In New Zealand: This document is intended for the general information of New Zealand wholesale investors only and does not constitute financial advice. This is not a regulated offer for the purposes of the Financial Markets Conduct Act 2013 (FMCA) and is only available to New Zealand investors who have certified that they meet the requirements in the FMCA for wholesale investors. Natixis Investment Managers Australia Pty Limited is not a registered financial service provider in New Zealand.

In Colombia: Provided by Natixis Investment Managers International Oficina de Representación (Colombia) to professional clients for informational purposes only as permitted under Decree 2555 of 2010. Any products, services or investments referred to herein are rendered exclusively outside of Colombia. This material does not constitute a public offering in Colombia and is addressed to less than 100 specifically identified investors.

In Latin America: Provided by Natixis Investment Managers International.

In Chile: Esta oferta privada se inicia el día de la fecha de la presente comunicación. La presente oferta se acoge a la Norma de Carácter General N° 336 de la Superintendencia de Valores y Seguros de Chile. La presente oferta versa sobre valores no inscritos en el Registro de Valores o en el Registro de Valores Extranjeros que lleva la Superintendencia de Valores y Seguros, por lo que los valores sobre

los cuales ésta versa, no están sujetos a su fiscalización. Que por tratarse de valores no inscritos, no existe la obligación por parte del emisor de entregar en Chile información pública respecto de estos valores. Estos valores no podrán ser objeto de oferta pública mientras no sean inscritos en el Registro de Valores correspondiente.

In Mexico: Provided by Natixis IM Mexico, S. de R.L. de C.V., which is not a regulated financial entity, securities intermediary, or an investment manager in terms of the Mexican Securities Market Law (Ley del Mercado de Valores) and is not registered with the Comisión Nacional Bancaria y de Valores (CNBV) or any other Mexican authority. Any products, services or investments referred to herein that require authorization or license are rendered exclusively outside of Mexico. While shares of certain ETFs may be listed in the Sistema Internacional de Cotizaciones (SIC), such listing does not represent a public offering of securities in Mexico, and therefore the accuracy of this information has not been confirmed by the CNBV. Natixis Investment Managers is an entity organized under the laws of France and is not authorized by or registered with the CNBV or any other Mexican authority. Any reference contained herein to "Investment Managers" is made to Natixis Investment Managers and/or any of its investment management subsidiaries, which are also not authorized by or registered with the CNBV or any other Mexican authority.

In Uruguay: Provided by Natixis Investment Managers Uruguay S.A., a duly registered investment advisor, authorised and supervised by the Central Bank of Uruguay. Office: San Lucar 1491, Montevideo, Uruguay, CP 11500. The sale or offer of any units of a fund qualifies as a private placement pursuant to section 2 of Uruguayan law 18,627.

In Brazil: Provided to a specific identified investment professional for information purposes only by Natixis Investment Managers International. This communication cannot be distributed other than to the identified addressee. Further, this communication should not be construed as a public offer of any securities or any related financial instruments. Natixis Investment Managers International is a portfolio management company authorized by the Autorité des Marchés Financiers (French Financial Markets Authority - AMF) under no. GP 90-009, and a public limited company (société anonyme) registered in the Paris Trade and Companies Register under no. 329 450 738. Registered office: 43 avenue Pierre Mendès France, 75013 Paris. The above referenced entities are business development units of Natixis Investment Managers, the holding company of a diverse line-up of specialised investment management and distribution entities worldwide. The investment management subsidiaries of Natixis Investment Managers conduct any regulated activities only in and from the jurisdictions in which they are licensed or authorised. Their services and the products they manage are not available to all investors in all jurisdictions. It is the responsibility of each investment service provider to ensure that the offering or sale of fund shares or third party investment services to its clients complies with the relevant national law.

The provision of this material and/or reference to specific securities, sectors, or markets within this material does not constitute investment advice, or a recommendation or an offer to buy or to sell any security, or an offer of any regulated financial activity. Investors should consider the investment objectives, risks and expenses of any investment carefully before investing. The analyses, opinions, and certain of the investment themes and processes referenced herein represent the views of the portfolio manager(s) as of the date indicated. These, as well as the portfolio holdings and characteristics shown, are subject to change. There can be no assurance that developments will transpire as may be forecasted in this material. The analyses and opinions expressed by external third parties are independent and does not necessarily reflect those of Natixis Investment Managers. Although Natixis Investment Managers believes the information provided in this material to be reliable, including that from third party sources, it does not guarantee the accuracy, adequacy, or completeness of such information. May not be redistributed, published, or reproduced, in whole or in part. Amounts shown are expressed in USD unless otherwise indicated. Natixis Investment Managers may decide to terminate its marketing arrangements for this fund in accordance with the relevant legislation



ABOUT MIROVA

Mirova is a global asset management company dedicated to sustainable investing and an affiliate of Natixis Investment Managers. At the forefront of sustainable finance for over a decade, Mirova has been developing innovative investment solutions across all asset classes, aiming to combine long term value creation with positive environmental and social impact. Headquartered in Paris, Mirova offers a broad range of equity, fixed income, multi-asset, energy transition infrastructure, natural capital and private equity solutions designed for institutional investors, distribution platforms and retail investors in Europe, North America, and Asia-Pacific. Mirova and its affiliates had €30.9 billion in assets under management as of March 31, 2024. Mirova is a mission-driven company, labeled B Corp*.

**The reference to a ranking or a label does not prejudice the future performance of the funds or its managers*

MIROVA

Portfolio Management Company - Anonymous Company RCS Paris No.394 648 216
AMF Accreditation No. GP 02-014
59, Avenue Pierre Mendès France 75013 Paris
Mirova is an affiliate of Natixis Investment Managers.
[Website](#) - [LinkedIn](#)

NATIXIS INVESTMENT MANAGERS

French Public Limited liability company RCS Paris n°453 952 681
Registered Office: 59, avenue Pierre Mendès-France 75013 Paris
Natixis Investment Managers is a subsidiary of Natixis.

MIROVA US

888 Boylston Street, Boston, MA 02199; Tel: 857-305-6333 Mirova U.S, LLC (Mirova US) is a U.S.-based investment advisor that is wholly owned by Mirova. Mirova is operating in the U.S. through Mirova US. Mirova US and Mirova entered into an agreement whereby Mirova provides Mirova US investment and research expertise, which Mirova US then combines with its own expertise, and services when providing advice to clients.

MIROVA UK

UK Private limited company
Company registration number: 7740692 Authorised and Regulated by the Financial Conduct Authority ("FCA") under number 800963
Registered office: Quality House by Agora, 5-9 Quality Court, London, WC2A 1HP
The services of Mirova UK Limited are only available to professional clients and eligible counterparties. They are not available to retail clients. Mirova UK Limited is wholly owned by Mirova.

MIROVA SUNFUNDER EAST AFRICA LIMITED

Mirova SunFunder East Africa Limited
A company incorporated with limited liability in the Republic of Kenya
Workify 11th Floor,
Wood Avenue Plaza
P.O. BOX 59067 GPO
Nairobi
Mirova SunFunder East Africa Limited is a subsidiary of Mirova SunFunder Inc.



BUS